

Alcohol, Tobacco, and Other Drugs (ATOD)

REGIONAL PREVENTION COORDINATORS (RPC)



NW Region 1:
Melissa



NE Region 2:
Laura



W Central Region 3:
Nicki



E Central Region 4:
Sara



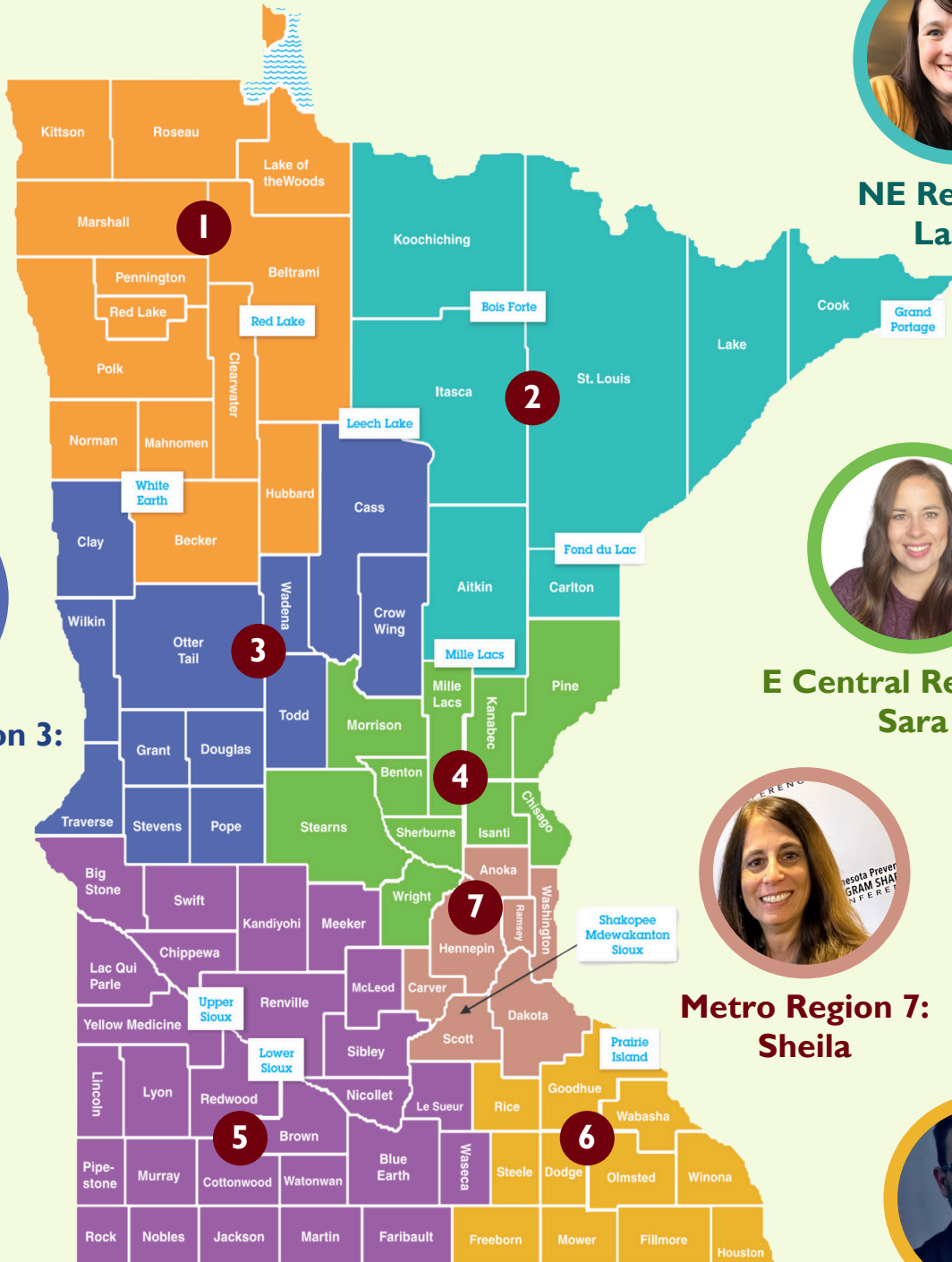
SW Region 5:
Gina



Metro Region 7:
Sheila



SE Region 6:
Cameron





"We support Minnesota communities in their effort to prevent youth substance use."

CONTACT INFORMATION

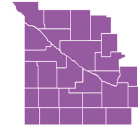
NW Region 1

Melissa Perreault
Polk County Public Health
P.O. Box 403
816 Marin Avenue, Suite 125
Crookston, MN 56716
Office: 218-281-3385
Cell: 218-289-0697
Melissa.Perreault@co.polk.mn.us



SW Region 5

Gina Schoenfeld
Project Turnabout
660 - 18th Street
PO Box 116
Granite Falls, MN 56241
Office: 320-564-4911
Cell: 507-236-0447
Gschoenfeld@projectturnabout.org



NE Region 2

Laura Bennett
Carlton-Cook-Lake-St. Louis
Community Health Board
404 West Superior Street, Suite 250
Duluth, MN 55802
Office: 218-733-2861
Cell: 218-349-1829
BennettL2@communityhealthboard.org



SE Region 6

Cameron Wisti
Parenting Resource Center
105 1st Street SE
Austin, MN 55912
Cell: 507-440-5227
prevention@prc-austinmn.org



W Central Region 3

Nicki Linsten-Lodge
Pine River-Backus Family Center
245 Barclay Ave
P.O. Box 1
Pine River, MN 56474
Cell: 218-606-2816
reg3rpc@gmail.com



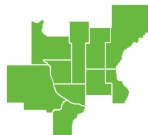
Metro Region 7

Sheila Watercott
Association for Nonsmokers-MN
2395 University Avenue West, Suite 310
St. Paul MN 55114-1512
Cell: 320-360-9187
sheila@ansrmn.org



E Central Region 4

Sara Pundsack
Kanabec County Public Health
905 Forest Ave E
Mora, MN 55051
Office: 320-679-6321
Cell: 320-591-0776
sara.pundsack@co.kanabec.mn.us



Scan here to visit
www.rpcmnmn.org
for more
information.